



STAINLESS STEEL MESH FACADES

COMPILED BY GEORGE WHITTLE

MAKE SURE IT'S STAINLESS 

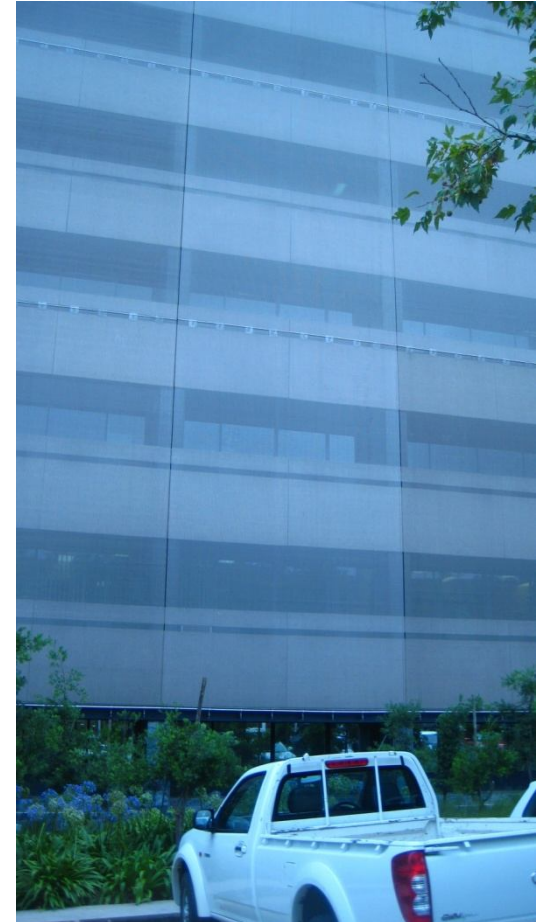
CASE STUDY 2

- ▶ Office building revamp using external mesh cladding



PROJECT BRIEF

- ▶ Revamp exterior 1970's office block
- ▶ Minimal structural alterations
- ▶ Material:
 - Durable
 - Heat resistant
 - Sun screen
 - Minimal maintenance/ cleaning
 - Eco-friendly
 - 100% recyclable



MATERIAL PROPERTIES

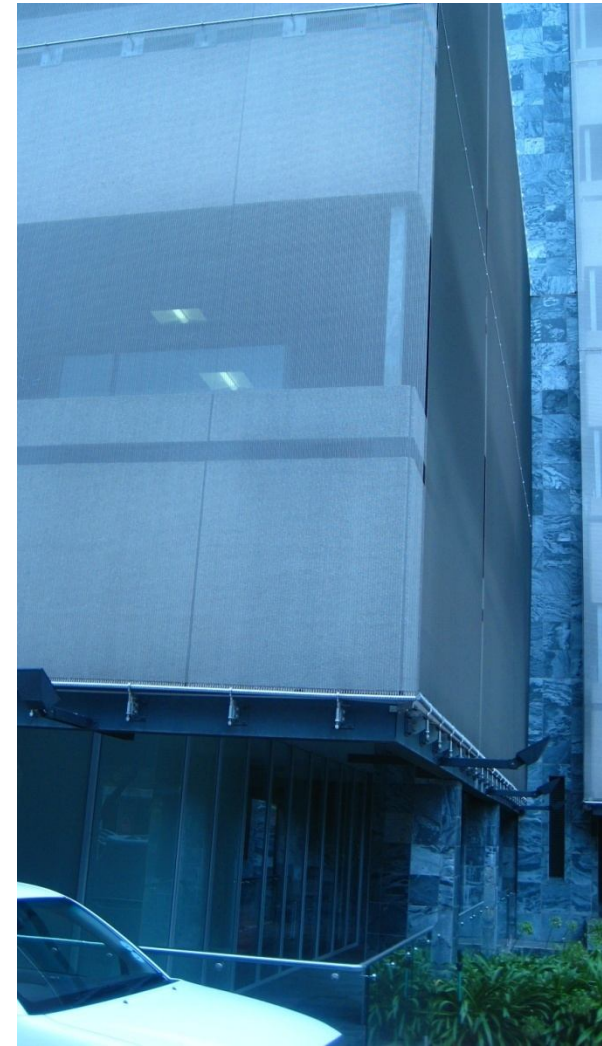
- ▶ GKD Omega 1520
- ▶ Grade: 316L Stainless Steel
- ▶ Quantity used: 120 000m²
- ▶ Open area: 50,6%
- ▶ Wire diameter:
 - Cable 2mm
 - Rod 1,5mm

- ▶ Cable Pitch: 17,5mm
- ▶ Weft wire pitch: 3,5mm
- ▶ Thickness: ca. 4,5mm
- ▶ Weight: ca. 5,2 kg/m²
- ▶ Max mesh width: 8m
- ▶ Standard width: 6m
- ▶ Standard fixing detail– inserted round bar with eye–bolts



ADVANTAGES

- ▶ Aesthetically pleasing
- ▶ Low heat conductivity
- ▶ Lets in light/air
- ▶ Effective sun screen
- ▶ Excellent security screen
- ▶ Minimal tenant disruption during installation
- ▶ Eco-friendly
- ▶ 100% recyclable
- ▶ Low/minimal maintenance



ACKNOWLEDGMENTS

- ▶ GKD Buismet
- ▶ Murray and Roberts

